

MENGAPUR PROJECT

NI 43-101 TECHNICAL REPORT SUMMARY

DECEMBER 2011
CORPORATE PRESENTATION

MONUMENT
MINING LIMITED

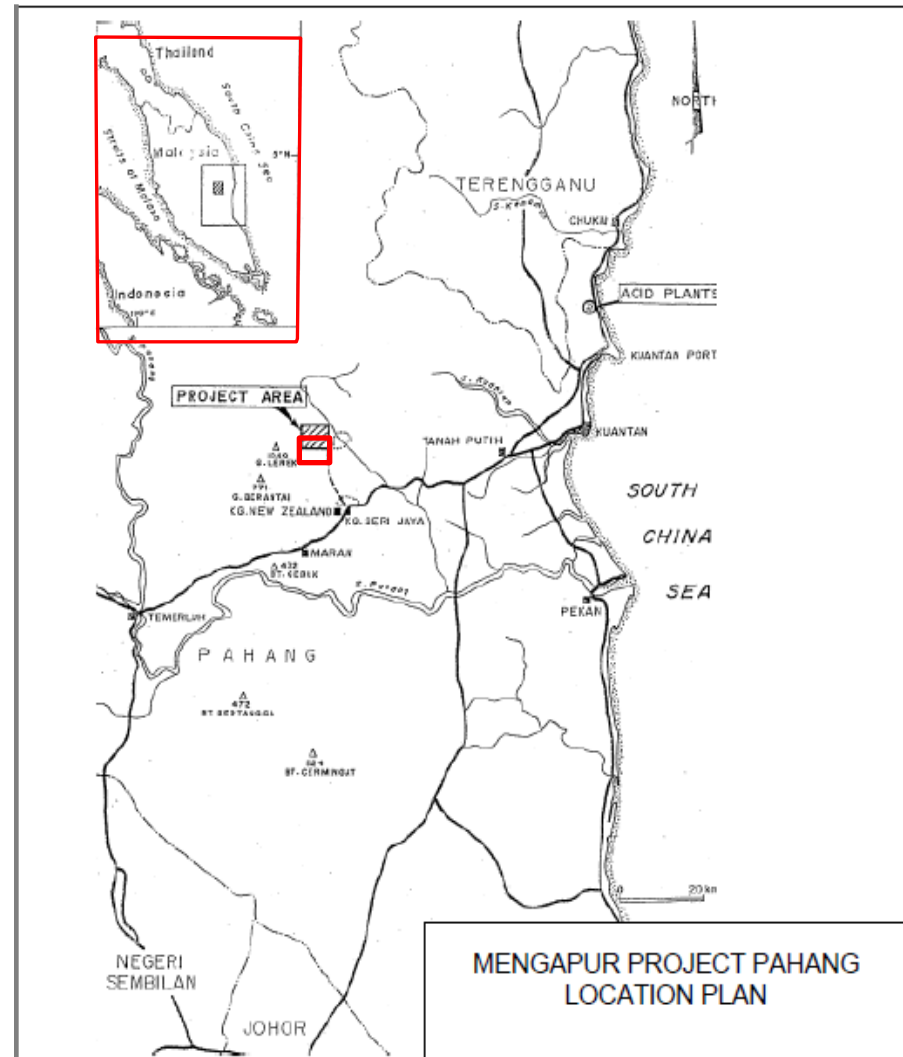
www.monumentmining.com
TSXV: MMY
D7Q1: FSE

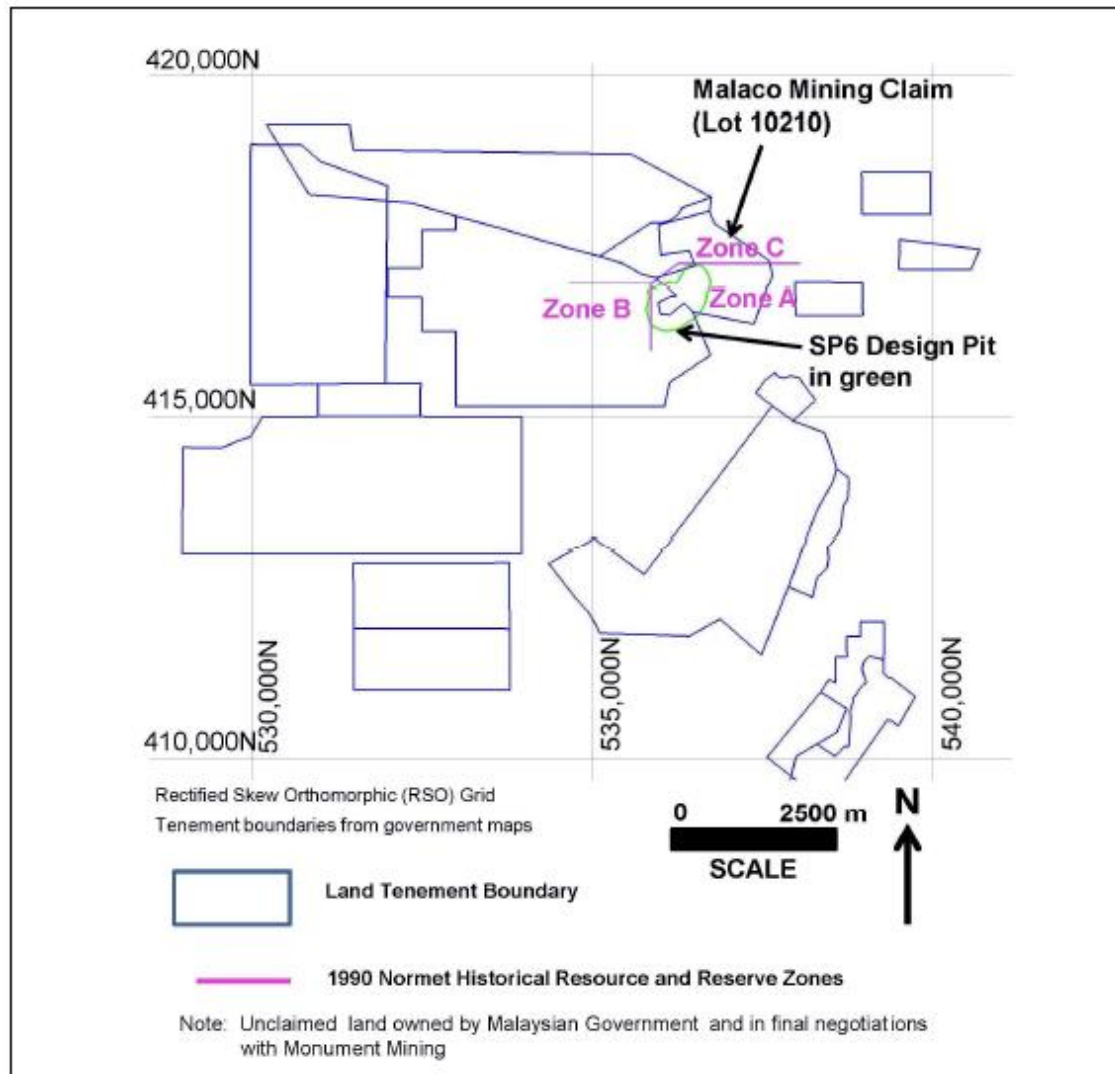


This presentation contains forward-looking information about Monument Mining Limited (“Monument”), its business and future plans. Statements containing such forward-looking information (“forward-looking statements”) are statements that are not historical facts and include the completion, timing and structure of Monument’s acquisition of an interest in the Mengapur Project, the concurrent private placement and the plans for the development of the Mengapur Project. The forward-looking statements in this presentation are subject to various risks, uncertainties and other factors that could cause actual results or achievements to differ materially from those expressed or implied by the forward-looking statements. These risks and certain other factors include, without limitation, regulatory approval of Monument’s acquisition of the Mengapur Project and the private placement, the estimated cash cost per ounce of gold production and the estimated cash flows which may be generated from the operations, general economic factors and other factors that may be beyond the control of Monument, statements regarding the future price of gold; conclusions of economic evaluation; the realization of mineral resource estimates; the timing and amount of estimated future production, development and exploration; costs of future activities; capital and operating expenditures; success of exploration activities; mining or processing issues; currency exchange rates; government regulation of mining operations; and environmental risks. Generally, forward-looking information can be identified by the use of forward- looking terminology such as "plans", "expects" or "does not expect", "is expected", "budget", "scheduled", "estimates", "forecasts", "intends", "anticipates" or "does not anticipate", or "believes", or variations of such words and phrases or state that certain actions, events or results "may", "could", "would", "might" or "will be taken", "occur" or "be achieved". Forward-looking information is subject to known and unknown risks, uncertainties and other factors that may cause the actual results, level of activity, performance or achievements of Monument to be materially different from those expressed or implied by such forward-looking information, including but not limited to: general business, economic, competitive, geopolitical and social uncertainties; the actual results of current exploration activities; foreign operations risks; other risks inherent in the mining industry and other risks described in Monument’s MD&A, which is available under the profile of Monument on SEDAR at www.sedar.com. Although Monument has attempted to identify important factors that could cause actual results to differ materially from those contained in forward-looking information, there may be other factors that cause results not to be as anticipated, estimated or intended. There can be no assurance that such information will prove to be accurate, as actual results and future events could differ materially from those anticipated in such statements. Accordingly, readers should not place undue reliance on forward- looking information. Monument does not undertake to update any forward-looking information, except in accordance with applicable securities laws.

This presentation is comprised of information contained in the technical report entitled “Monument Mining Limited: Mengapur Project, Pahang State, Malaysia, Project No. V1165” dated November 2011 (the “Technical Report”) prepared for Monument by Snowden Mining Industry Consultants in compliance with 43-101. The disclosure in this presentation is qualified in its entirety by the information in the Technical Report. Todd Johnson, P.E., MAusIMM, M.Sc. Geological Engineering and M.Sc. Geology, is a Qualified Person as defined in NI 43-101 and has reviewed and approved the technical and scientific information contained in this presentation. Certain of the information contained in this presentation and the Technical Report is based on historical estimates of the quantity, grade, or metal or mineral content of deposits on the Mengapur Project, which are contained in a historical feasibility study on the project prepared in 1993 for Malaysia Mining Corporation Berhad (the “Historical Study”) and some more recent documents, including those described in sections four (Property description and location), six (History), and eleven (Sample preparation, analyses and security) of the Technical Report. Any information of an economic nature included in this presentation and the Technical Report is based on historical data and would need to be updated based on more exploration and assay data and current cost information before it could be relied upon. A qualified person has not done sufficient work on the Mengapur Project to classify the historical estimates in the Historical Study as current mineral resources or mineral reserves. Monument has not verified these historical estimates and is not treating them as current mineral resources or mineral reserves. For further information on the relevance and reliability of the historical estimates; the key assumptions, parameters, and methods used to prepare the historical estimates; the differences between the categories used in the historical estimates and those used in NI 43-101; more recent estimates and data available to Monument; and comments on what work needs to be done to upgrade or verify the historical estimate as current mineral resources or mineral reserves, please see the complete Technical Report, which is available on Monument’s SEDAR profile at www.sedar.com.

- ✓ Located 16km off the Freeway linking Kuala Lumpur and Kuantan. 80km by freeway to Kuantan Port and 250km to Kuala Lumpur International Airport
- ✓ Project History
 - First discovered by the Geological Survey of Malaysia (GSM) in 1979/80
 - Pahang State Government granted mining rights to Malaysia Mining Corporation Berhad (MMC) in 1983
 - MMC completed a definitive feasibility study, but did not pursue development and reverted the land back to the Government after 1993
 - Cermat acquired the mining lease to Lot 10210 that covers majority of the historical Proven and Probable reserve
 - Malaco, a wholly-owned subsidiary of Sumatec Resources Bhd., purchased 58% of Cermat on July 5th, 2005, and later acquired the remaining 42%.
 - Sumatec sold all of its shares in Malaco to Diamond-Hard Mining Sdn Bhd on Mar. 17, 2008
 - Monument reached agreement with Malaco to acquire 70% pre-financing interest in Mengapur project upon due diligence.





This presentation includes historical estimates and related information, which has not been verified by Monument. Read the complete Technical Report, which is available on Monument's SEDAR profile at www.sedar.com. The information in this presentation is qualified in its entirety by the limitations described in the Technical Report.



This presentation includes historical estimates and related information, which has not been verified by Monument. Read the complete Technical Report, which is available on Monument's SEDAR profile at www.sedar.com. The information in this presentation is qualified in its entirety by the limitations described in the Technical Report.



This presentation includes historical estimates and related information, which has not been verified by Monument. Read the complete Technical Report, which is available on Monument's SEDAR profile at www.sedar.com. The information in this presentation is qualified in its entirety by the limitations described in the Technical Report.



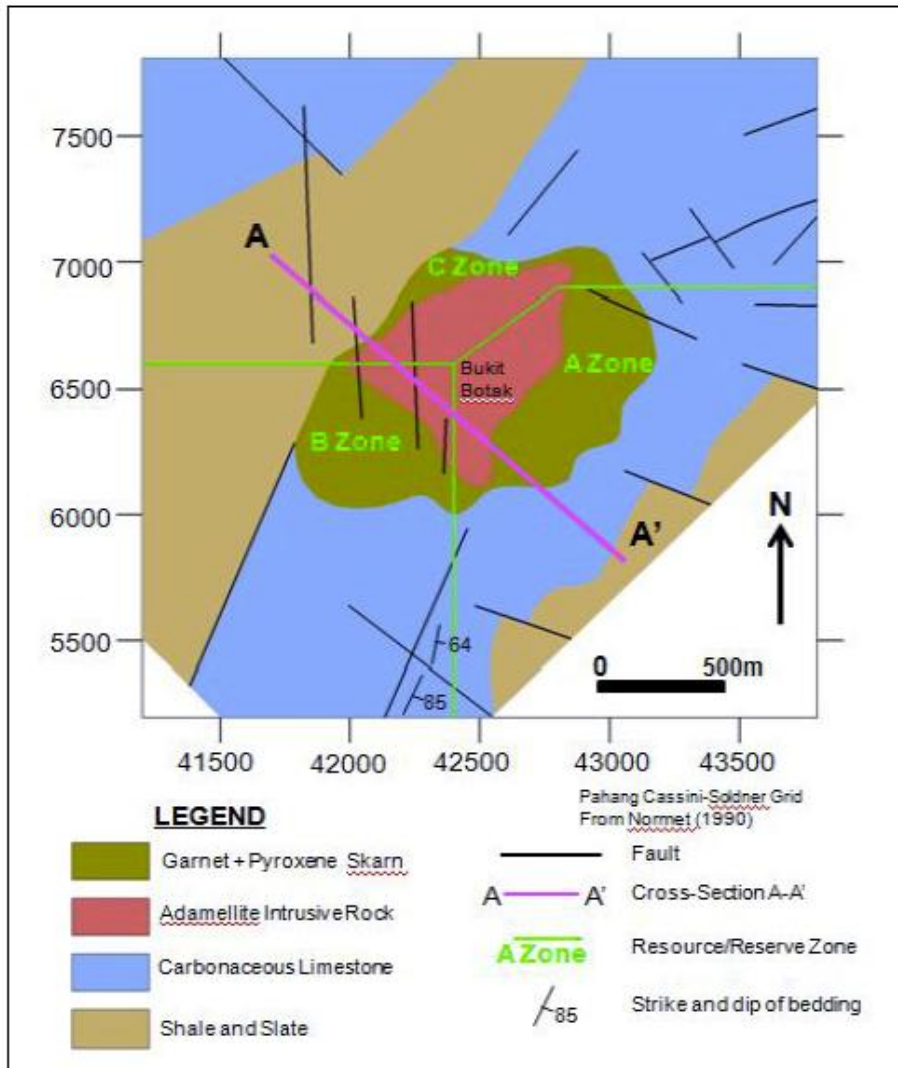
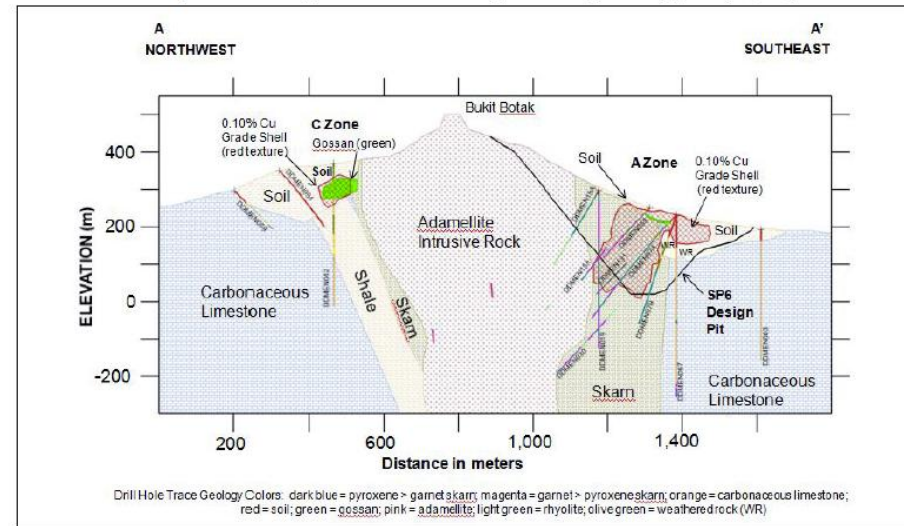


Figure 7.3 Geology Cross-Section A-A' Showing the SP6 Design Pit: Mengapur Project, Malaysia



This presentation includes historical estimates and related information, which has not been verified by Monument. Read the complete Technical Report, which is available on Monument's SEDAR profile at www.sedar.com. The information in this presentation is qualified in its entirety by the limitations described in the Technical Report.

➤ **Four (4) Main Phases of Drilling Carried out by MMC at Mengapur:**

➤ **Phase 1 Drilling carried out between Nov 1983 and Mar 1985**

49 holes, at a spacing of 140-200m, for a total of 17,254m along with 120 line km gravity and magnetic surveys

➤ **Phase 2 drilling carried out between Apr 1985 to Dec 1985**

42 holes, at a spacing between 100m and 200m, for a total of 17,174m along with geological mapping and geochemical soil sampling covering 10km² area

➤ **Phase 3 drilling carried out between Apr and Nov 1986**

74 holes totaling 17,298m to close drill hole spacing to 70m from 100m to 200m in Zone A & B and to 100m to 200m from the previous 200m to 400m

➤ **Phase 4 drilling carried out between Feb 1987 and Jan 1988**

33 in-fill holes totaling 6,342m to delineate the higher grade zones in greater detail

➤ **Monument Mining has carried out Due Diligence drilling since May 2011 and plans to continue drilling to provide data for feasibility study**

Total Mengapur Historic Measured and Indicated Resources within Zones A, B, and C

		Tonnes (Mt)	EQV Cu (%)	S (%)	Cu (%)	Au (g/t)	Ag (g/t)
OXIDE	Measured	4.866	0.419	0	0.47	0.05	27.82
	Indicated	16.406	0.557	0	0.64	0.12	26.45
	Sub-total	21.272	0.525	0	0.6	0.1	26.70
SULPHIDE	Measured	63.438	0.661	7.622	0.25	0.18	3.3
	Indicated	139.699	0.579	7.04	0.19	0.13	3.85
	Sub-total	203.137	0.605	7.222	0.21	0.15	3.68
TOTAL		224.409	0.597	6.54	0.25	0.16	8.86

Note: The data presented in the table have been produced at a cut-off grade of 0.336% EQV Cu reflecting the available information in 1990 commodity prices, operating costs, and plant recoveries

➤ Sulphide Ore

- **Conventional crushing, grinding and flotation processing plant would be set up at Mengapur mine site to produce**
 - **copper concentrate to sell for direct smelting**
 - **pyrrhotite concentrate for further treatment**
- **An acid plant would be built to further treat the pyrrhotite concentrate**
 - **To produce phosphoric acid, MAP and DAP using phosphate rock**
- **Heat generated during roasting and acid manufacture would be recovered as steam and converted to electricity to meet acid plant operation needs and sell to National Grid suppliers (TNB)**

- **High Grade Leachable Oxide Ore (HGLO)**
 - **An approximately 14,000m² re-usable heap leach pad would be built at Mengapur mine to extract copper from the 2.3mt HGLO ore**

➤ **Monument Plans to Carry out the Following On-Going Exploration**

- **Three (3) diamond drill rigs and a RC drill rig to complete a 1.6 year totaling 65,980m drilling program at an approximate cost of CAN\$13.4m**
- **Assay, metallurgical testing, and topographic survey (air and ground) would be carried out at the same period**

➤ **Feasibility Study**

- **Monument plans to carry out a feasibility study during the course of on-going exploration**

➤ **Mine and Plant Development**

- **Monument expects that the mine and plant construction would be developed in three (3) year time period**

Monument Mining Limited Richard Cushing Investor Relations (Tel) 1-604-638-1661 rcushing@monumentmining.com	CHF Investor Relations Robin Cook Senior Account Manager (Tel) 1-416-868-1079 ext. 228 robin@chfir.com	AXINO AG Wolfgang Seybold Chairman (Tel) 49-711-2535-9240 wolfgang.seybold@axino.de
--	---	--